

# Entry Systems

*Welcome to a grand entrance.*

The complete line of INTEX Entry Systems can transform a typical front door into a *welcome home* statement. With choices of trim styles, headers and pediments, there are over 100 combinations - just right for any house style.

- ◆ Fits 36" - 77" entry door and side light variations.
- ◆ Four trim kit styles.
- ◆ Custom sizes and styles also available.



Custom header



8 -1/2" Built-up Fluted Entrance Kit with Cross-head and custom window surround.



3 -1/2" Fluted Entrance Kit



4 -1/2" Reeded Entrance Kit



5 -1/2" Fluted Entrance Kit



8 -1/2" Built-up Fluted Entrance Kit

*add great personality*



The 4-1/2" Reeded Entrance Kit comes complete with mullion casing and standard cross-head shelf.

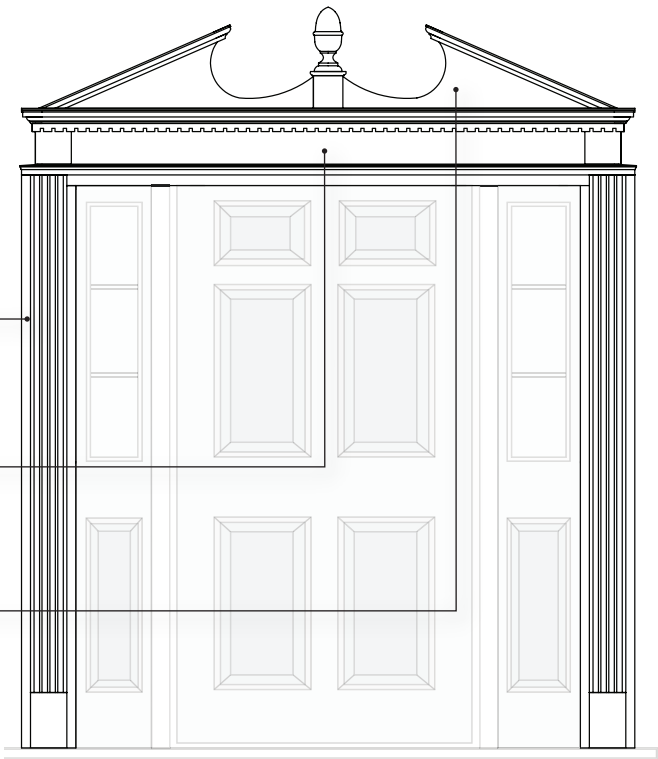


Custom options available

# Entry Systems

INTEX products are designed to create an inviting entrance to any new or remodeled home, whether classic, traditional or contemporary. First decide on an Entrance Kit style. Next, select the Cross-head that best suits your home style. And to complete the entrance, add a pediment, ram's head or sunburst.

- Step 1**  
Select Entrance Kit  
(pilaster, plinth block and shelf)
- Step 2 (optional)**  
Select Cross-head  
(frieze board)
- Step 3 (optional)**  
Select Pediment



## 1. Entrance Kits

- For door units up to 7'-0" in height
- 2-1/4" Mullion Casing
- Comes with a standard Cross-head Shelf

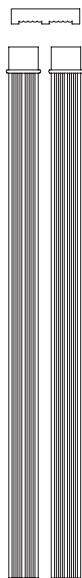
Entrance Kits	3/0 doors	10-30-10 & 60 doors
3-1/2" Fluted	DK3F30	DK3F64
4-1/2" Reeded	DK4R30	DK4R64
5-1/2" Fluted	DK5F30	DK5F64
8-1/2" Built-up Fluted Fluted	DK8F30	DK8F64



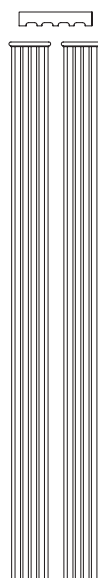
3 -1/2" Fluted Entrance Kit



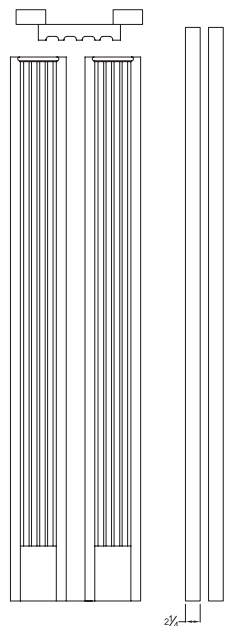
4 -1/2" Reeded Entrance Kit



5 -1/2" Fluted Entrance Kit



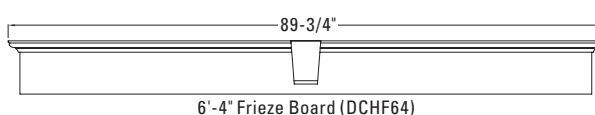
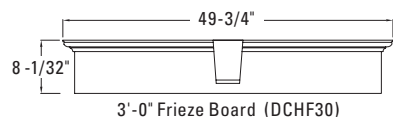
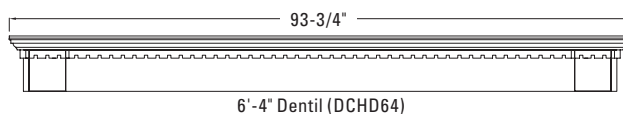
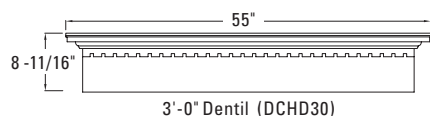
8 -1/2" Built-Up Fluted Entrance Kit



## 2. Cross-heads

Note: Cross-heads may be used in conjunction with Pediments

Cross-heads	3/0 doors	10-30-10 & 60 doors
Frieze Head	DCHF30	DCHF64
Dentil Head	DCHD30	DCHD64



## 3. Pediments

Note: Cross-heads may be used in conjunction with Pediments

Pediments	3/0 doors	10-30-10 & 60 doors
Pediment Head	DCHP30	DCHP64
Rams Head	N/A	DCHR64
Elliptical Sunburst	N/A	DCHE64*

\*use with DK4R64 on a 10-30-10 door only.

